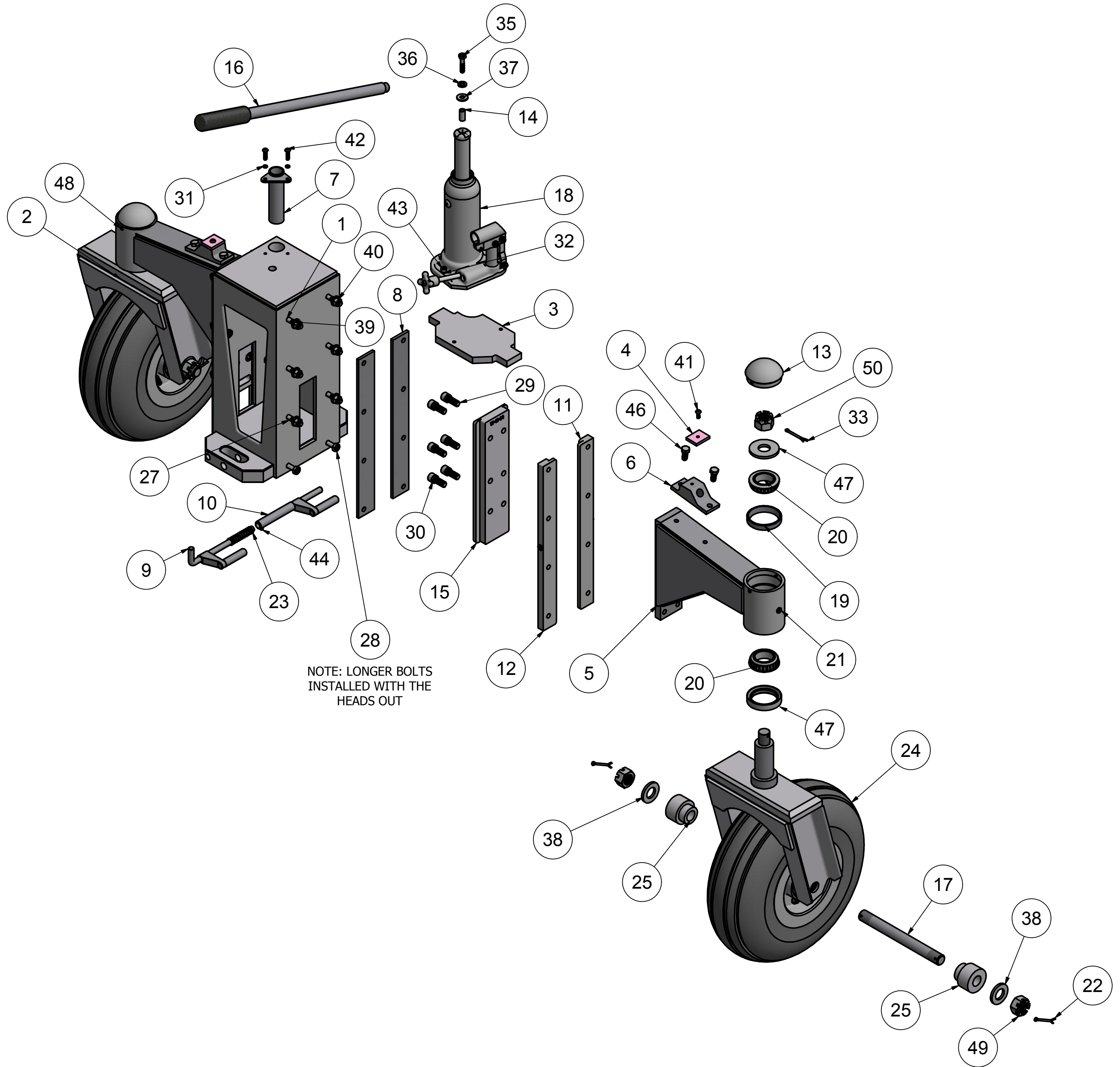
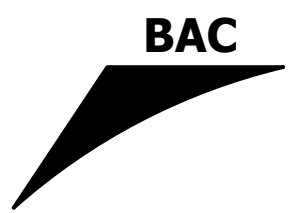


## BCW-4300A



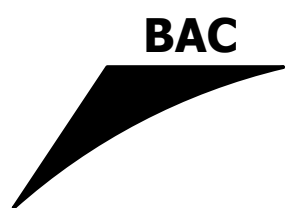


# BRACKETT AIRCRAFT COMPANY<sup>INC.</sup>

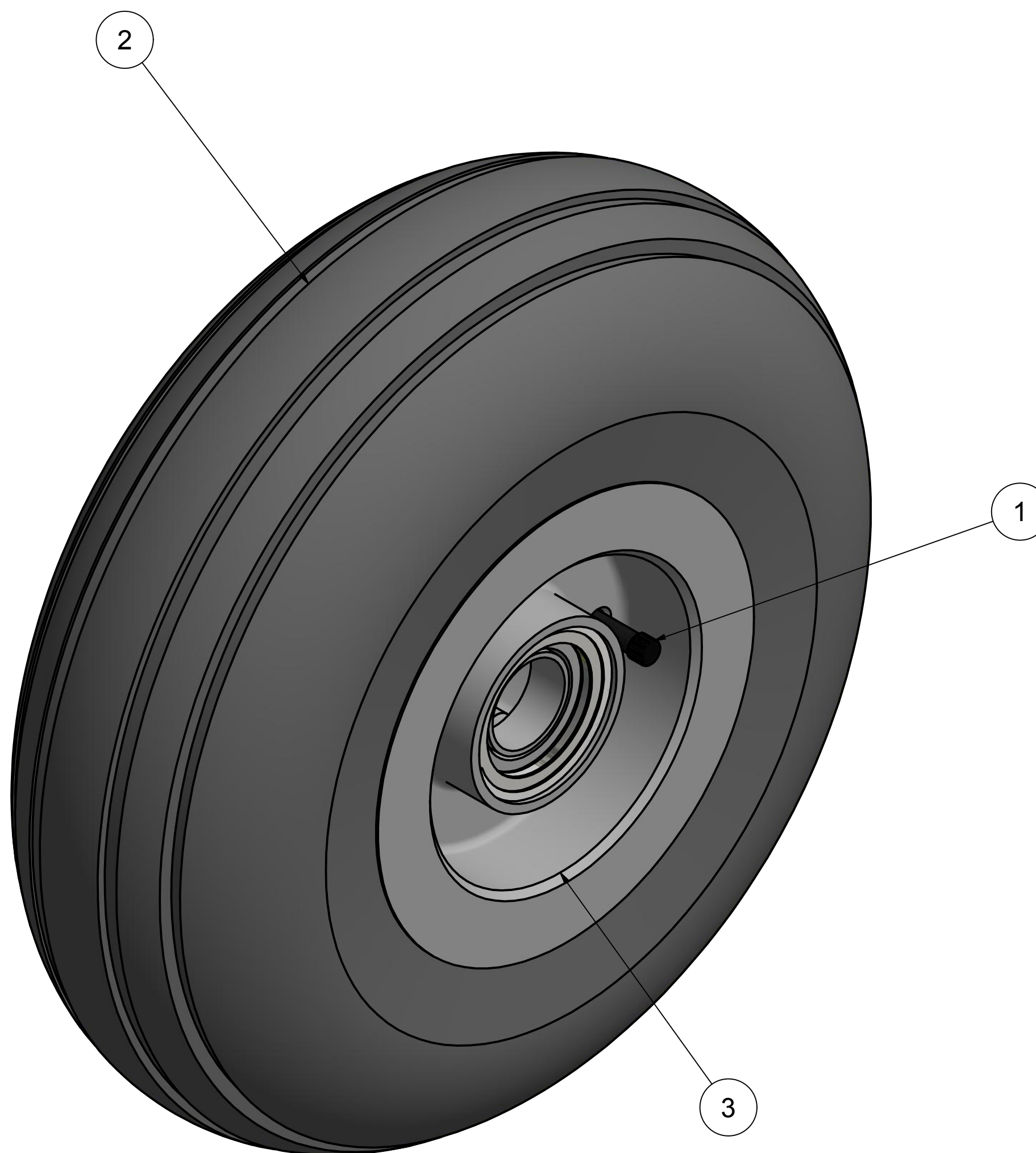
www.brackettaircraft.com

## PARTS LIST

ITEM	QTY	PART NUMBER	DESCRIPTION
1	1	W-43-00A	WELDED FRAME ASM.
2	2	W-43-12A	CASTER FRAME
3	1	W-43-13	JACK BASE
4	2	W-43-09-03	NUT PLATE PAD
5	2	W-43-10SA	ARM ASSEMBLY
6	2	W-43-09A	NUT PLATE
7	1	W-43-11	HANDLE HOLDER
8	4	W-43-03A	WEAR PLATE
9	1	W-43-20	HANDLE PLUNGER
10	1	W-43-21	INNER PLUNGER
11	2	W-43-05AL	LEFT GUIDE
12	2	W-43-05AR	RIGHT GUIDE
13	2	W-43-HCA	HUB CAP
14	1	W-43-06A	BUSHING
15	2	W-43-04	AXLE SLIDE
16	1	W-43-14	HANDLE ASSEMBLY
17	2	W-43-12-06	AXLE
18	1	W-HUF-03EB	JACK WITH BOLT KIT
19	4	LM67010	BEARING CUP
20	4	LM67048	BEARING
21	6	10595K14	1/4-28 FLUSH STYLE ZERK FITTING
22	4	98338A479	1/8 X 1 1 3/4 COTTER PIN S.S.
23	1	10417	SPRING
24	2	W-500514	TIRE/WHEEL ASSEMBLY
25	4	W-43-15	WHEEL BUSHING
26	1	W-4300-NP	I.D. PLATE
27	12	91286A189	5/16-24 X 1 1/2 BOLT
28	4	91286A190	5/16-24 X 1 3/4 BOLT
29	12	91251A424	3/8-24 X 1 SHCS
30	12	91101A031	3/8 LOCK WASHER
31	2	98437A108	#10 HIGH COLLAR LOCK WASHER S.S.
32	2	91102A029	1/4 HIGH COLLAR LOCK WASHER S.S.
33	2	98338A478	1/8 X 1 1/2 COTTER PIN
34	4	90190A144	NO. 6 X 1/4 SHEET METAL SCREW
35	1	91286A113	1/4-20 X 1 1/4 BOLT
36	1	92146A540	1/4 LOCK WASHER S.S.
37	1	93852A102	1/4 SAE WASHER S.S.
38	4	96659A112	3/4 SAE S.S.
39	16	96659A107	5/16 SAE WASHER S.S.
40	16	91831A125	5/16-24 LOCKNUT S.S.
41	2	92949A265	10-32 X 1/2 BHCS S.S.
42	2	92949A269	10-32 X 3/4 BHCS S.S.
43	2	92196A540	1/4-20 X 3/4 SHCS S.S.
44	1	91375A438	10-32 X 1/4 RECESS SET SCREW
45	2	17257	SEAL MFG. P/N CRS117257
46	4	92240A303	5/16-24 X 3/4 S.S. BOLT
47	2	98970A136	3/4 U.S.S. WASHER
48	4	92949A108	440 X 3/8 BHCS S.S.
49	4	08SNFP-075	3/4-16 SLOTTED HEX NUT
50	2	AN310-C12	3/4-16 CASTLE NUT S.S.

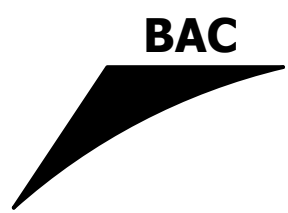


**W-500514** TIRE/WHEEL ASSEMBLY



PARTS LIST

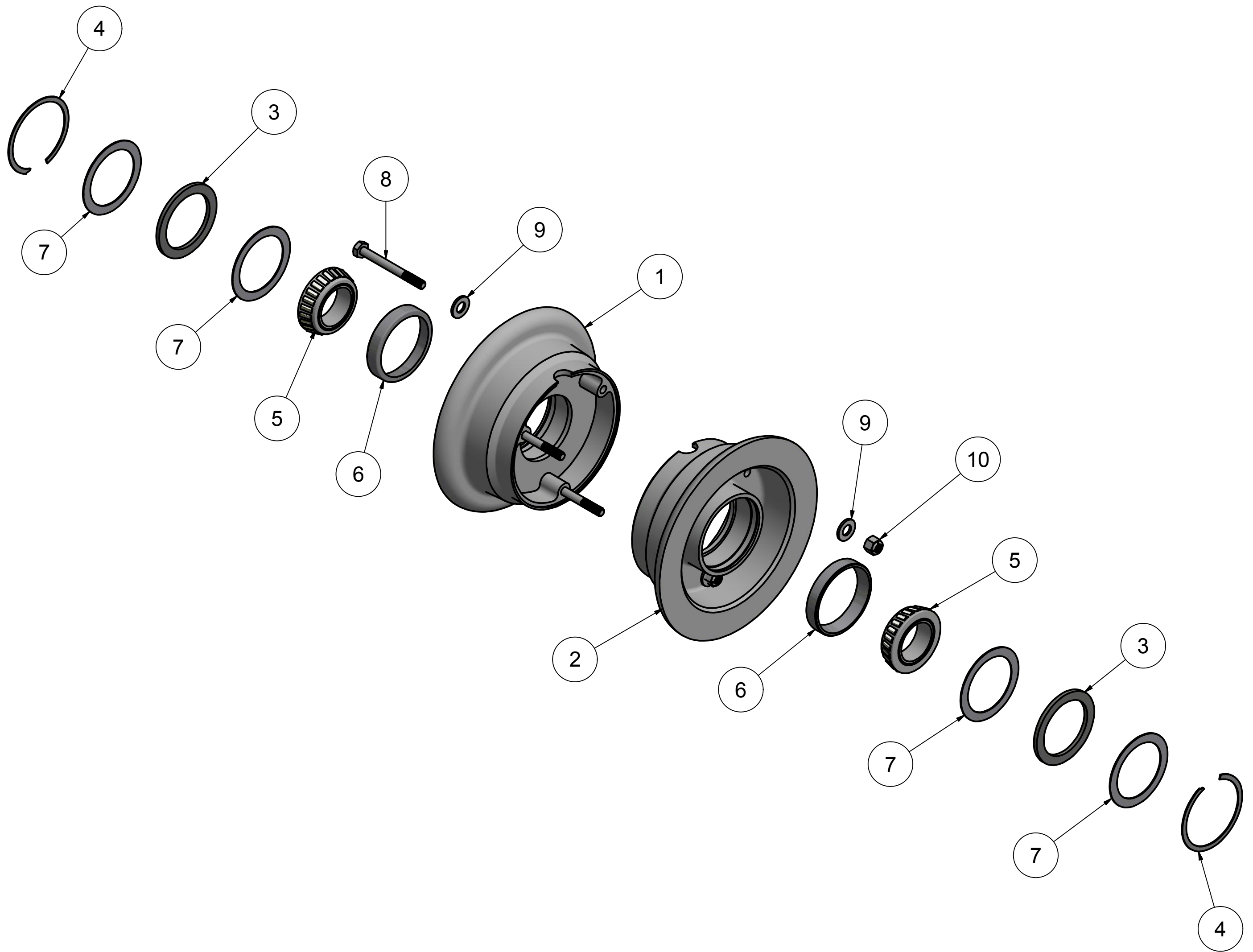
ITEM	QTY	PART NUMBER	DESCRIPTION
1	1	W-500514TB	INNER TUBE 5.00-5 WITH TR-67 VALVE
2	1	W-500514TR	5.00 X 5 14 PLY TIRE
3	1	W-500514WH	WHEEL ASSEMBLY



# BRACKETT AIRCRAFT COMPANY INC.

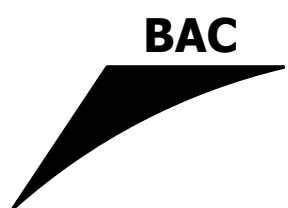
www.brackettaircraft.com

## W-500514WH WHEEL ASSEMBLY



### PARTS LIST

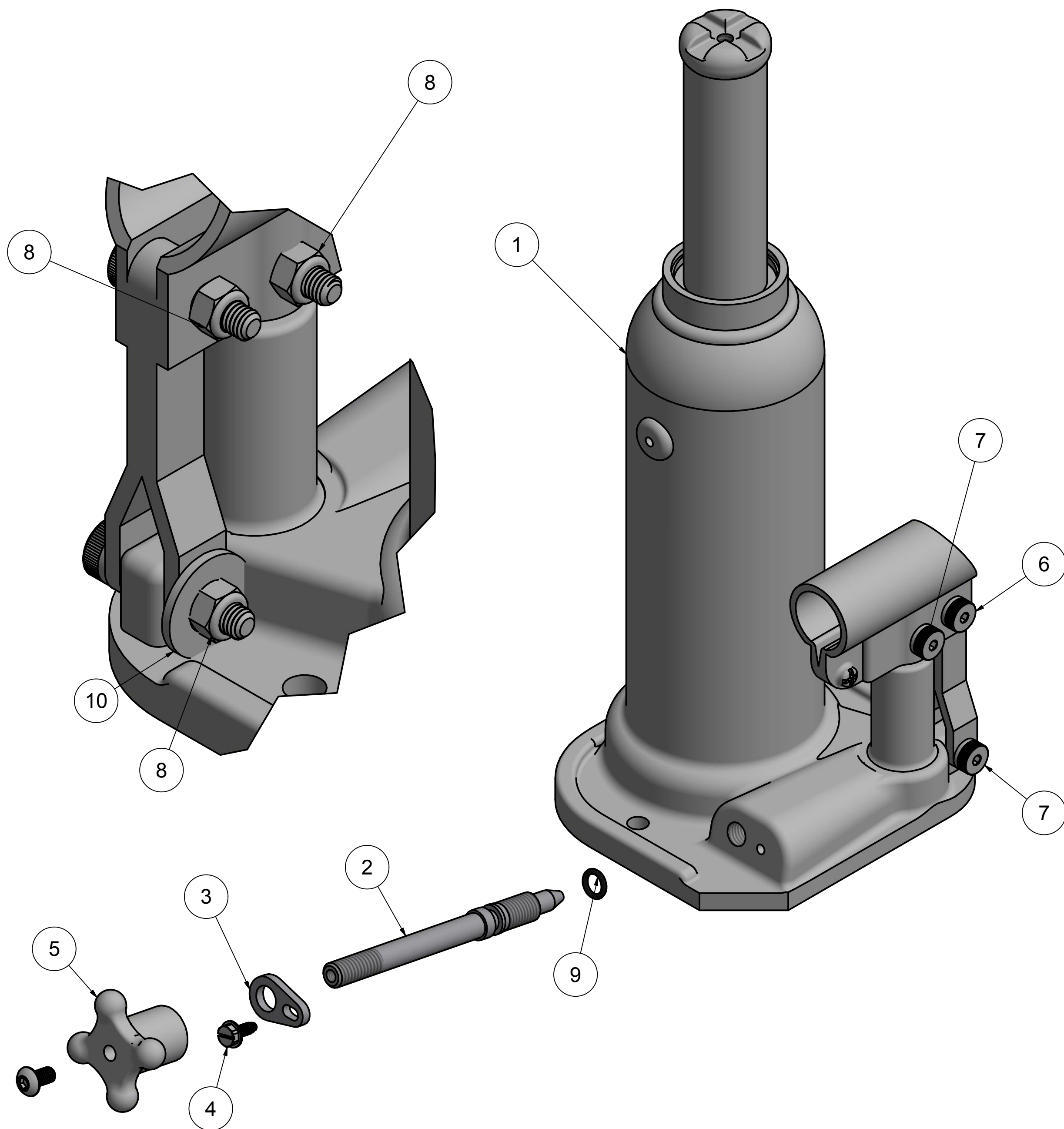
ITEM	QTY	PART NUMBER	DESCRIPTION
1	1	W-500514WH-2	OUTER WHEEL HALF
2	1	W-500514WH-1	INNER WHEEL HALF
3	2	4077-3	FELT WASHER
4	2	VH-237	SNAP RING
5	2	LM67048	BEARING
6	2	LM67010	BEARING CUP
7	4	C133502	2.372 O.D. 1.811 I.D. .031 WASHER S.S.
8	3	AN4-23A	1/4-28 X 2 13/32 CAD PLATED BOLT
9	6	AN960-416	5/16 WASHER
10	3	MS21045-4	1/4-28 LOCK NUT



# BRACKETT AIRCRAFT COMPANY INC.

www.brackettaircraft.com

## W-HUF-03DB JACK WITH BOLT KIT



SEPT. 2009 S/N 3012 REPLACED KYB WITH NORCO JACK

### PARTS LIST

ITEM	QTY	PART NUMBER	DESCRIPTION
1	1	W-HUF-03D-01	HYDRAULIC JACK
2	1	W-HUF-10-01	VALVE STEM
3	1	W-43-02-01A	RETAINER
4	1	93882A146	6-32 X 3/8 SLOTTED SCREW
5	1	6047K350A	ALUMINUM 4 ARM KNOB 5/16-18 THREADED
6	1	92981A101	6MM X 12MM M5 THREAD SHOULDER BOLT
7	2	92981A102	M5 THREAD 6MM X 16MM SHOULDER BOLT
8	3	90576A104	M5 .8MM PITCH LOCK NUT
9	1	9464K112	O RING
10	1	AN960-416	5/16 WASHER
11	1	92949A263	10-32 X 3/8 CAP SCREW S.S.
N.S.	OPT.	603200	JACK #6503A SEAL KIT
N.S.	OPT.	AW ISO 32	HYDRAULIC JACK OIL
N.S.	OPT.	W-HUF-03-10D	HARDWARE KIT