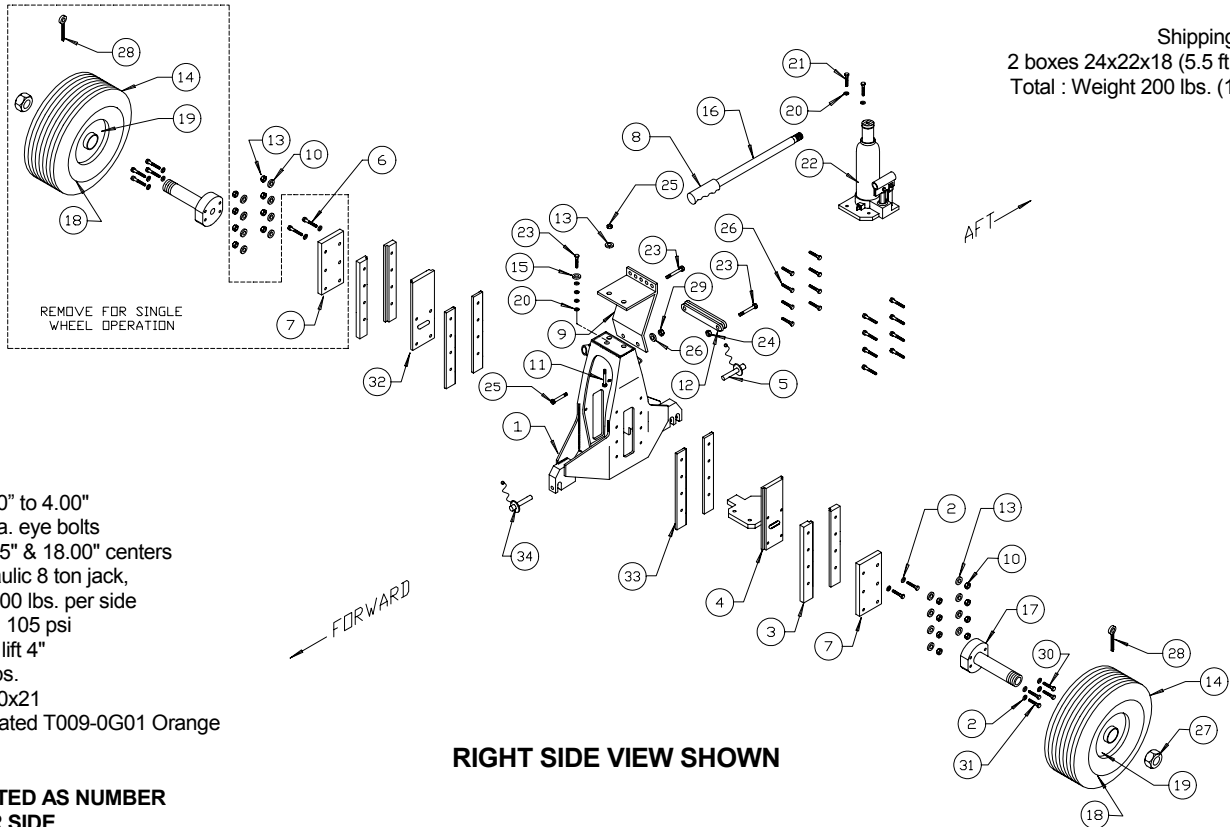


# BRACKETT AIRCRAFT COMPANY, INC.

7045 FLIGHTLINE DR., KINGMAN, AZ 86401 U.S.A. PH. 928-757-4005 FAX. 928-757-1948

Shipping Info:  
2 boxes 24x22x18 (5.5 ft.<sup>3</sup> ea.)  
Total : Weight 200 lbs. (11 ft.<sup>3</sup>)



**Specifications**

- Skid tube dia. 3.00" to 4.00"
- Attach points, 2 ea. eye bolts  
fits both 16.25" & 18.00" centers
- Operation - Hydraulic 8 ton jack,  
hi gross 10,000 lbs. per side
- Tire size - 18x5.5, 105 psi
- Approximate skid lift 4"
- Weight each 95 lbs.
- Dimensions 19x20x21
- Paint: Powder Coated T009-0G01 Orange

**RIGHT SIDE VIEW SHOWN**

**NOTE:**  
**PARTS ARE LISTED AS NUMBER**  
**REQUIRED PER SIDE.**

PAGE 1 OF 2

S.N. 004 AND UP

MODEL: BDW-246A-1805 & BDW-246A-1806

ITEM NO.	PART NUMBER	DESCRIPTION	NO REQ
	BDW-246A-1805	RIGHT SIDE SW ASSEMBLY	1
	BDW-246A-1806	LEFT SIDE SW ASSEMBLY	1
1	W-246A-00	BASIC FRAME ASM.	1
2	WASHER LOCK 3/8	3/8 LOCK WASHER	8
3	W-245-05G	GUIDE	4
4	W-246-07	AXLE SLIDE ASM.	1
5	CL8BLPB3.00C	BALL LOCK	1
6	BOLT 3/8-24 X 1 1/4	BOLT	4
7	W-246-03	AXLE SLIDE EXTENSION	2
8	HG-1	HANDLE GRIP	1
9	W-246-SWK-09	BRACKET ASM.	1
10	NUT LOCK 5/16-18	LOCK NUT	20
11	BOLT 5/16-24 X 1	BOLT	4
12	W-246-SWK-06	STRAPS	2
13	AN960-516	WASHER	20
14	W-18 X 5.5 TR	8 PLY TIRE	2
15	WASHER SAE 1/4	SAE WASHER	1
16	W-245-14-01	HANDLE JACK	1
17	W-245-11B	SPINDLE	2
18	W-5.30-8	TUBE	2
19	40-117A	WHEEL	2
20	WASHER HCL 1/4	HIGH COLLAR LOCK WASHER	5
21	BOLT ALLEN 1/4-20 X 3/4	ALLEN BOLT	2

