

# BRACKETT AIRCRAFT COMPANY INC.

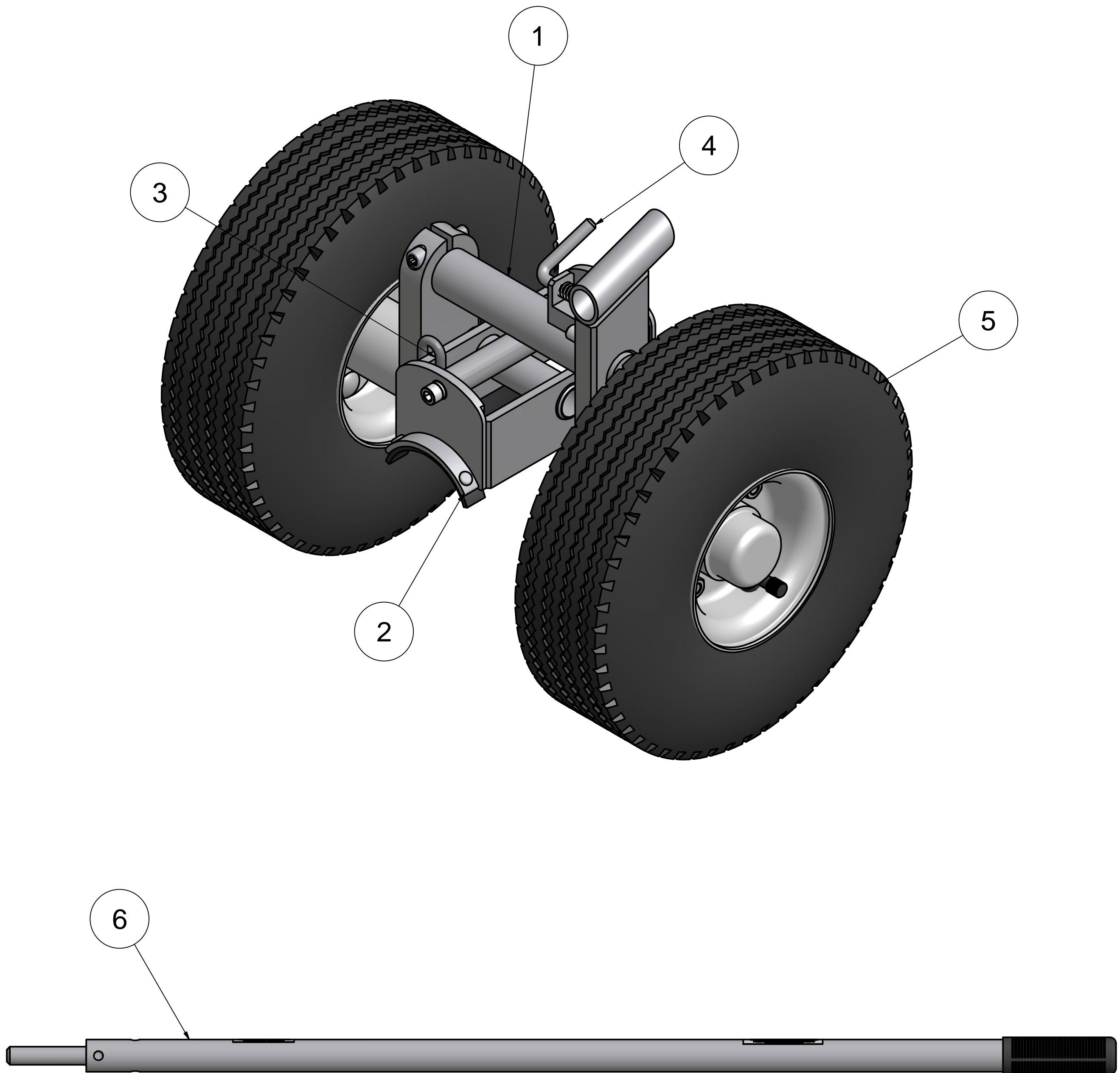
www.brackettaircraft.com

## BDW-F28A COMPLETE SET OF DUAL WHEELS

ENSTROM HELICOPTER

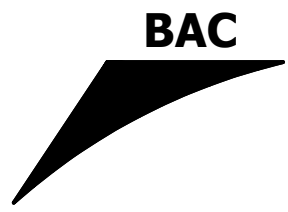
APPLICABLE AIRCRAFT: F-28, 280 & 480

SHIPPING SPECS: 52" X 15" X 15" @ 65 LBS.



### PARTS LIST

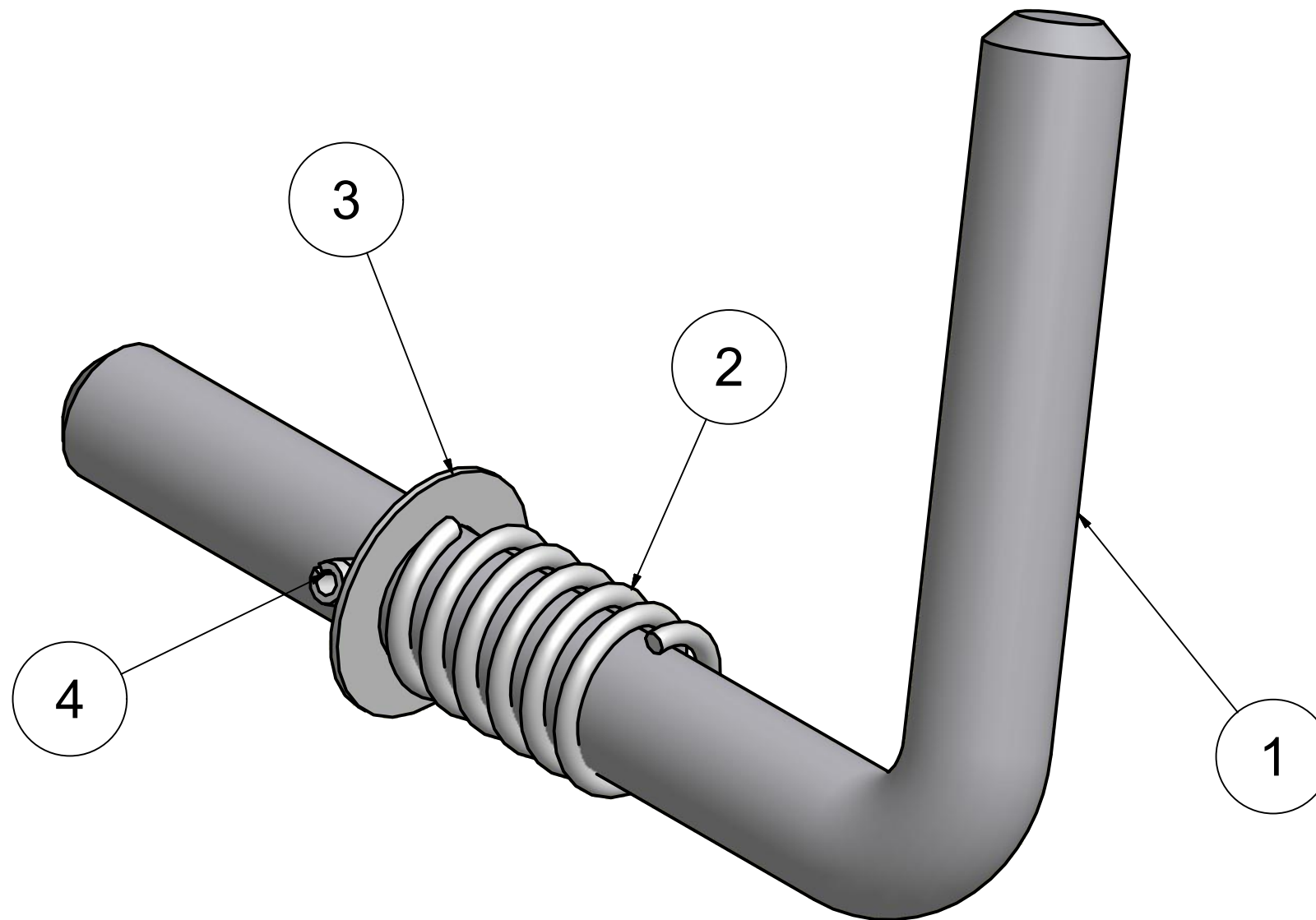
ITEM	QTY	PART NUMBER	DESCRIPTION
1	1	CONTACT BAC	FRAME ASSEMBLY (RIGHT SIDE SHOWN)
2	1	W-28A-10	CARRIER ASSEMBLY
3	1	W-28A-07R & L	WELDED PIN ASSEMBLY RIGHT & LEFT (RIGHT SIDE SHOWN)
4	1	W-LPK	L-PIN KIT
5	2	W-41046	TIRE/WHEEL BOLTED ASSEMBLY
6	1	W-U-110	HANDLE ASSEMBLY



# BRACKETT AIRCRAFT COMPANY INC.

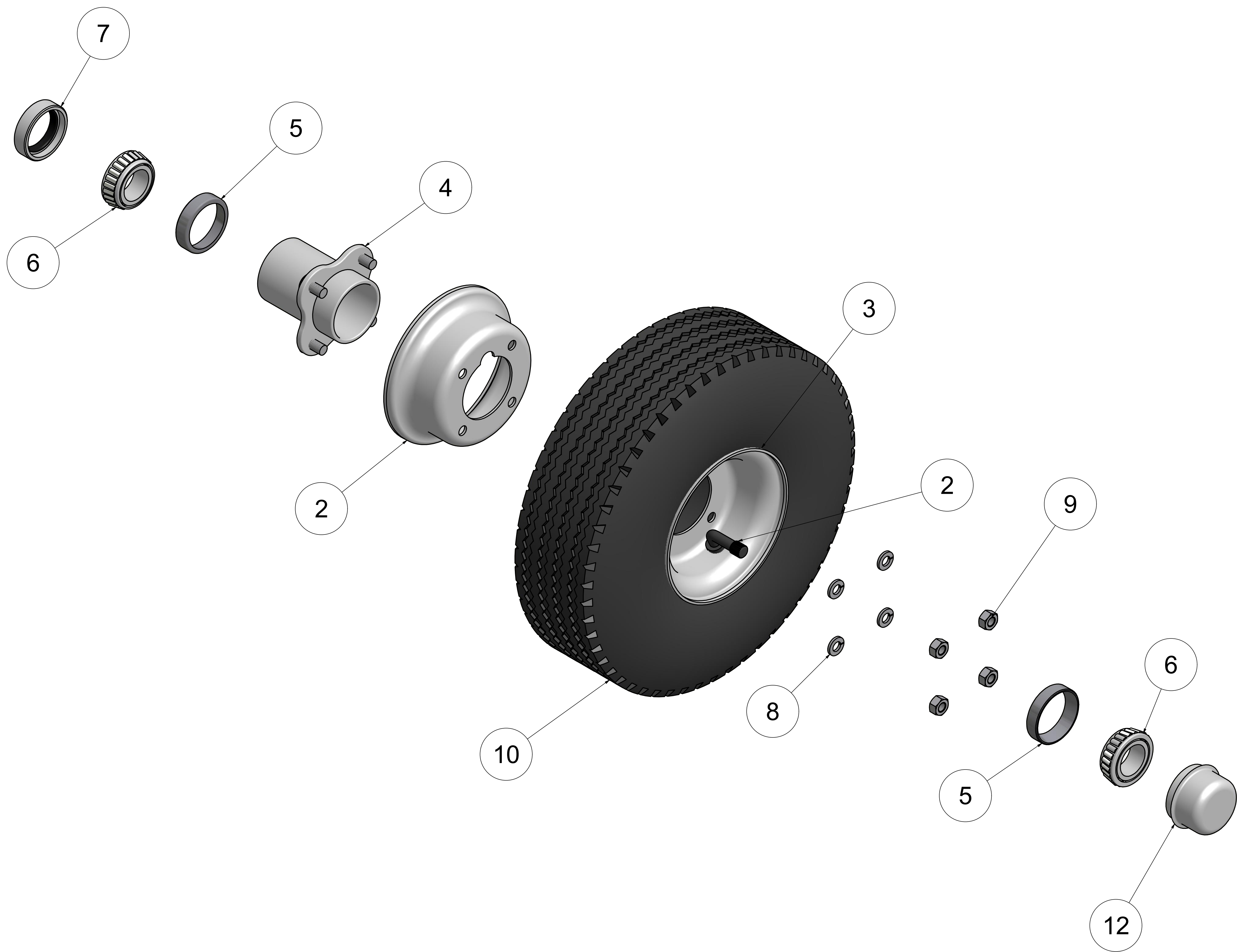
www.brackettaircraft.com

## W-LPK L-PIN KIT



### PARTS LIST

ITEM	QTY	PART NUMBER	DESCRIPTION
1	1	W-U-101	L-PIN
2	1	S-264	SPRING
3	1	98017A689	5/16 THIN WASHER (AN960-516)
4	1	92373A143	3/32 X 1/2 ROLL PIN S.S.



W-41046				
ITEM	QTY	PART NUMBER	DESCRIPTION	
1	1	W-41046TB	INNER TUBE	
2	1	R-44DM INNER	INNER WHEEL HALF	
3	1	R-44DM OUTER	OUTER WHEEL HALF	
4	1	H-431-34	OFFSET HUB	
5	2	LM11910	TAPERED ROLLER BEARING CUP	
6	2	LM11949	TAPERED ROLLER BEARING	
7	1	GS-3VHY	GREASE SEAL	
8	4	92146A030	5/16 LOCK WASHER	
9	4	95615A160	5/16 LOCK NUT	
10	1	W-41046TR	TIRE	
11	1	W-41046TB	TUBE	
12	1	HC-2	HUB CAP	